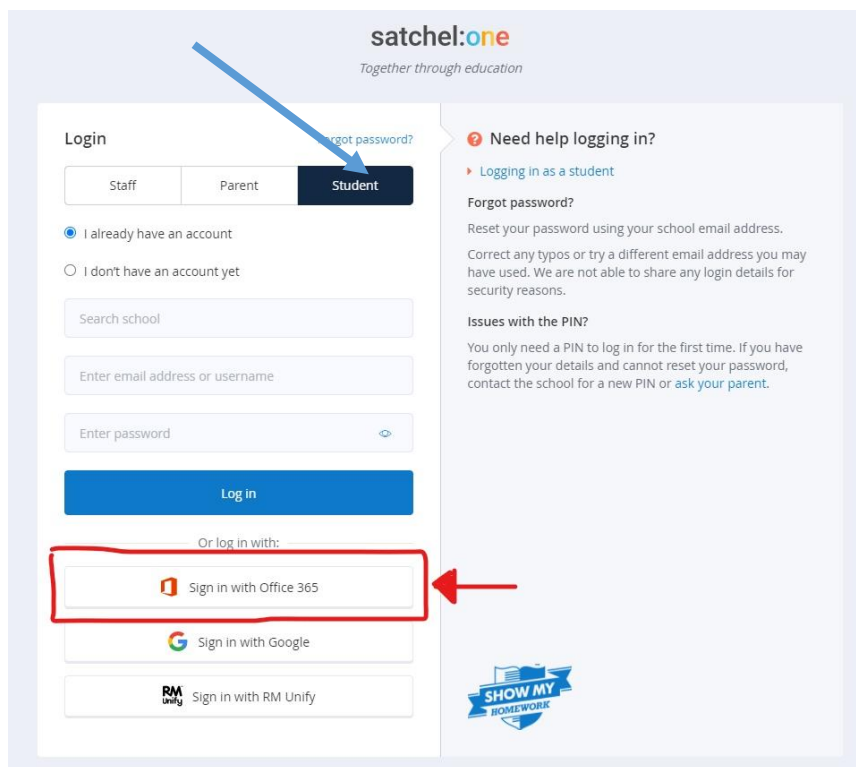


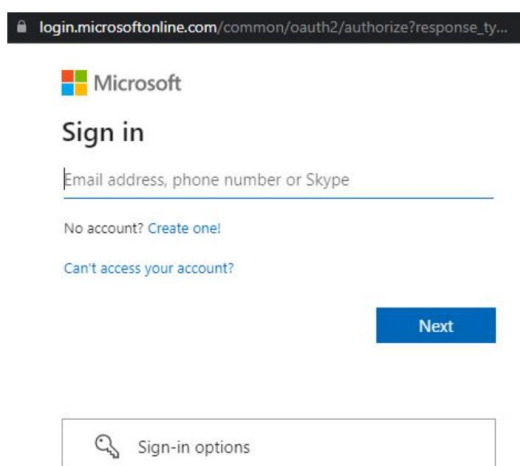
Satchel One Student Log In Help Sheet

Using a computer -

1. Go to the satchel One website – www.satchelone.com
2. Select 'student' from the tabs above the login window as shown below by the blue arrow.



3. Click the "Sign in with Office 365" button as shown by the red arrow above.
4. On the Microsoft sign in page like seen below, write your full school email address eg JoeBloggs21@noelbakeracademy.co.uk

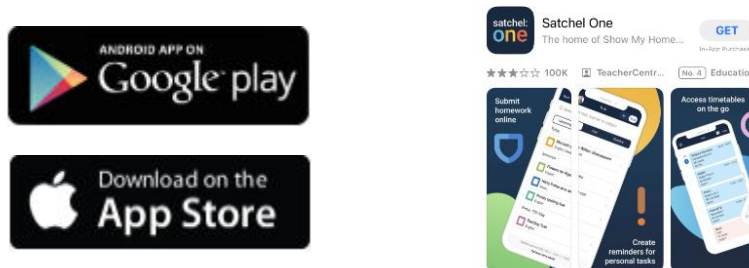


5. Make sure you type in your FULL email address, spell '**noelbakeracademy**' correctly and include the '**.co.uk,**' as these things are easily missed, and will prevent you from logging in.
6. Your password will be your normal school password.

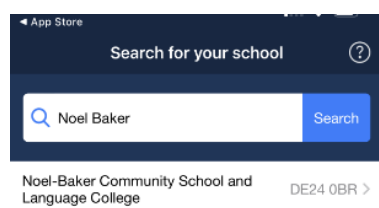
If you see an error of... "[We couldn't find an account with that username. Try another, or get a new Microsoft account.](#)" ...you have mistyped your email address.

Using the Satchel One app -

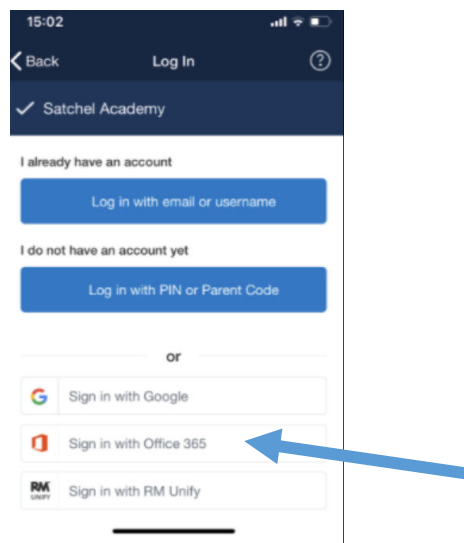
1. Download the Satchel One app from the App Store or Google Play Store.



2. Once you have downloaded the app, you will need to search for your school and then click on 'Noel-Baker Community School and Language College'



3. Click the "Sign in with Office 365" button as shown by the blue arrow below -



4. On the Microsoft sign in page like seen below, write your full school email address eg JoeBloggs21@noelbakeracademy.co.uk and then enter your normal school password.

